

# Product Guide

*Quality Pheromones & Trapping Systems*



# Welcome to Insects Limited, Inc.



Home office, laboratory, warehouse, and educational facility in Westfield, Indiana.

## HISTORY

Insects Limited, Inc. specializes in a unique niche of pest control that started out as an idea and has developed into a business that provides a range of products and services that are becoming mainstream in protecting stored food, grain, tobacco, timber, museum objects and fiber worldwide.

Insects Limited was established in 1982. It was founded on a statement made by an entomology professor at Purdue University in 1974 while owner Dave Mueller was attending college: *“The future of pest control is without the use of toxic chemicals.”* In 2012, the GreenWay retail line of products was spun off from Insects Limited with this same philosophy.

Today, Insects Limited, Inc. researches, tests, develops, manufactures, and distributes pheromones for stored product insects throughout North America and in over 60 countries worldwide.

Please take a few moments to review this product catalog. It contains a variety of useful tools with which you can monitor the presence or absence of pest insects.

Prevention and monitoring can help you reduce or eliminate your need for pesticides. We believe that you should use the target pest as the initial starting place when a pest problem needs a solution. *“A problem can’t be solved unless it can be measured.”*

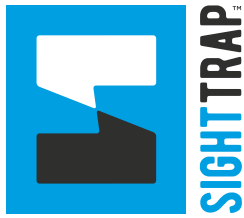
In all, our aim is to strive to provide the absolute best products and services available worldwide, to be respected, and maintain profitability with innovation, alternatives, and education.

— *The employees of Insects Limited, Inc.*

## INDEX

All Beetle Trap .....	4, 15
Almond Moth .....	7, 12
Angoumois Moth .....	13
Anoxic .....	10
Bioassay .....	17
Books .....	16
Carpet Beetle .....	9, 13
Casemaking Clothes Moth .....	9, 14
Cigarette Beetle .....	6, 12
Conditions .....	18
Dermestid .....	4, 13
Flour Beetles .....	6, 12
Fruit Fly .....	14
Grain Borers .....	8, 13
GreenWay .....	11
Hide Beetle .....	8, 14
Indian Meal Moth .....	5, 12, 14
Lab Services .....	17, 18
Lures Only .....	12-14
Mediterranean Flour Moth .....	5, 12
Moth Suppression .....	5, 14
Multi-Species .....	4
Museum and Fabric .....	9
Rice Weevil .....	8, 13
Merchant Grain .....	7, 13
Sight Trap .....	3, 15
Tobacco Moth .....	7, 12
Traps Only .....	15
Warehouse Beetle .....	7, 12
Webbing Clothes Moth .....	9, 14





- Detailed Reporting – Monitor traps, view pre-identified insects and detailed trending data.



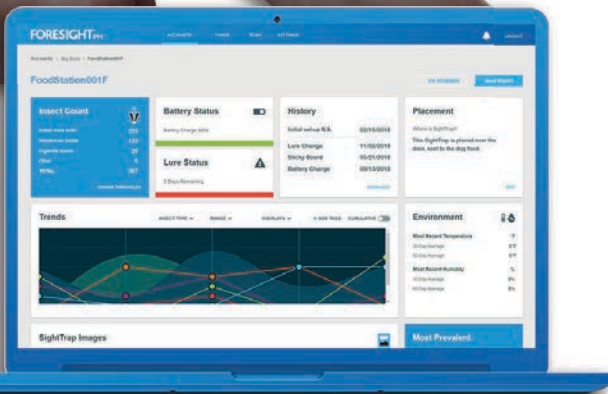
- Daily Images – Automatically records a daily image of your pheromone trap.



- Mobile Accessibility – Responsive customer service outside of your normal route.

- ForesightIPM™ app automatically shows and counts the insects in your trap

## See the Future



### SightTrap™ Trap Kits

*Kit contents:*

- 1 SightTrap glue board
- 1 PTL Multi-Species pheromone lure
- Device hanger
- 2 rechargeable lithium batteries
- 1 battery charger

- ST-1000 SightTrap kit (1)
- ST-1001 SightTrap glue boards
- ST-1003 SightTrap rechargeable battery
- ST-1007 SightTrap charger

**ForesightIPM.com**

## Stored Product Pheromone Kits

### ALL BEETLE TRAPS

- Low profile multi-component trap with cover, base and tray.
- Easy servicing.
- Choice of pheromone and glue boards for specific beetles or all stored product beetles.



#### All Beetle Trap with Gel Kit

Attracts: Rice weevil, Grain beetles, Lesser grain borer, Warehouse beetle, Cigarette beetle, Flour beetles and more  
*Kit contents:* 10 Ready-To-Use All Beetle Traps with Pheromone Gel, Instruction sheet  
 10x10 kits/case  
 IL-2700-10 kit (10)  
 IL-2700-100 case (100)



#### All Beetle AA Carpet Beetle Kit

Attracts: Black carpet beetle, Varied carpet beetle, Furniture carpet beetle  
*Kit contents:* 10 All Beetle traps with sticky boards, 10 AA Multi-Species Carpet Beetle Bullet Lures, 10 Dermestid Beetle Food Attractant Lures, Instruction Sheet  
 10x10 kits/case  
 IL-2110-10 kit (10)  
 IL-2110-100 case (100)



#### All Beetle Trap with SPB Lure Kit

Attracts: Rice weevil, Grain beetles, Lesser grain borer, Warehouse beetle, Cigarette beetle, Flour beetles and more  
*Kit contents:* 10 traps with sticky boards, 10 SPB Pheromone Lures, Instruction Sheet  
 10x10 kits/case  
 IL-2800-10 kit (10)  
 IL-2800-100 case (100)



#### All Beetle Dermestid Kit

*Kit contents:* 10 All Beetle Traps with sticky boards, 10 Dermestid Beetle Food Attractant Lures, Instruction Sheet  
 10x10 kits/case  
 IL-2300-10 kit (10)  
 IL-2300-100 case (100)

### PTL MULTI-SPECIES PRODUCTS

#### PTL Multi-Species Pheromone Lure

Attracts: Indian meal moth, Cigarette beetle, Warehouse beetle, Almond moth, Mediterranean flour moth, Tobacco moth, Cabinet beetle and more

IL-108-10 kit (10)  
 IL-108-100 case (100)



**Warehouse Beetle**  
*(Trogoderma spp.)*



#### PTL Multi-Species NoSurvivor™ Trap Kits

*Kit contents:* 10 sticky traps with hangers, 10 Bullet Lures, Instruction Sheet  
 10x10 kits/case  
 IL-408-10 kit (10)  
 IL-408-100 case (100)



**Cigarette Beetle**  
*(Lasioderma serricorne)*



**Indian Meal Moth**  
*(Plodia interpunctella)*

## Controlling Indian Meal Moths

A technology using large doses of pheromone is available from Insects Limited, Inc. to control Indian meal moths, Mediterranean flour moths, and Almond moths. This U.S. EPA registered technology shuts down male moth communication and offers the first pheromone based control tool for stored product protection.

### Allure MD™

Mating disruption of male moths occurs after one to two weeks. This small dispenser is loaded with large amounts of pheromone that is dispersed in the air and causes the male moths to stop searching for females. This delayed mating response causes the females to die without mating. This lowers the moth population resulting in fewer moths and fewer customer complaints.

*Place one Allure MD every 500–1500 sq. ft. The dispenser will last for 90 days.*

IL-106-25 5 dispensers/pouch, 5 pouches/box



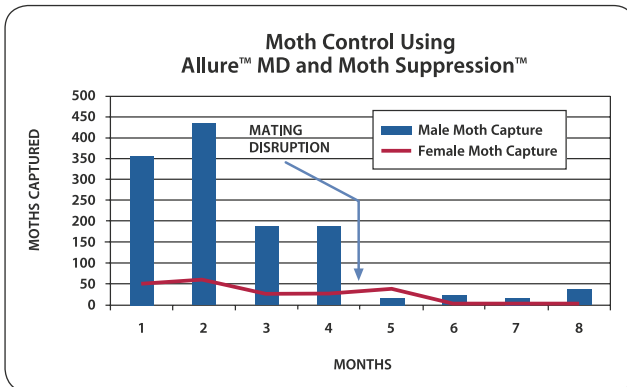
### Moth Suppression<sup>®</sup>

This female attractant is placed in a sticky trap. It works together with the Allure MD to offer a combination system to help control Indian meal moths and related moths. Female moths are lured to this sticky trap and the potential for thousands of fertile eggs can be eliminated.

*Place one Moth Suppression Trap/lure every 1500–3000 sq. ft. Lures last for 30 days.*

IL-160-10 10 traps, 20 lures/kit

IL 160-100 100 traps, 200 lures/case



*After Allure MD causes the male Indian meal moth population to crash in this food warehouse, the female moths start to search for a male to mate, and eventually get captured in the Moth Suppression traps.*

## INDIAN MEAL MOTH / MEDITERRANEAN FLOUR MOTH

### NoSurvivor™ Trap Kits

*Kit contents:* 10 sticky traps with hangers,  
10 Bullet Lures, instruction sheet  
10x10 kits/case

IL-164-10 kit (10)

IL-164-100 case (100)



### PTL Multi-Species NoSurvivor™ Trap Kits

*Attracts:* Indian meal moth, Warehouse beetle, Cigarette beetle

*Kit contents:* 10 traps with hangers  
10x10 kits/case

IL-408-10 kit (10)

IL-408100 case (100)



**Indian Meal Moth**  
(*Plodia interpunctella*)



**Mediterranean Flour Moth**  
(*Ephesia kuehniella*)

## Stored Product Pheromone Kits

### RED FLOUR BEETLE / CONFUSED FLOUR BEETLE



#### All Beetle Trap with Gel Kit

Attracts: Rice weevil, Grain beetles, Lesser grain borer, Warehouse beetle, Cigarette beetle, Flour beetles and more  
*Kit contents:* 10 Ready-To-Use All Beetle Traps with Pheromone Gel, Instruction sheet  
 10x10 kits/case  
 IL-2700-10 kit (10)  
 IL-2700-100 case (100)



+



#### All Beetle Trap with SPB Lure Kit

Attracts: Rice weevil, Grain beetles, Lesser grain borer, Warehouse beetle, Cigarette beetle, Flour beetles and more  
*Kit contents:* 10 traps with sticky boards, 10 SPB Pheromone Lures, Instruction Sheet.  
 10x10 kits/case  
 IL-2800-10 kit (10)  
 IL-2800-100 case (100)



#### PantryPatrol™

##### Corner Trap Kits

*Kit contents:* 24 traps, 24 pheromone/gel dispensers. Includes pheromone for Flour beetles, Indian meal moth, Warehouse beetle, Cigarette beetle, Rice weevil, Lesser grain borer  
 IL-1700-24 display case (24 traps)  
 IL-1700-100 bulk case, no pkg. (100 traps)



**Red Flour Beetle**  
*(Tribolium castaneum)*



**Confused Flour Beetle**  
*(Tribolium confusum)*

### CIGARETTE BEETLE



*(Lasioderma serricorne)*

#### NoSurvivor™ TrapKits

*Kit contents:* 10 traps with hangers, 10 Bullet Lures/kit  
 10x10 kits/case  
 IL-564-10 kit (10)  
 IL-564-100 case (100)



#### PTL Multi-Species NoSurvivor™ Trap Kits

*Attracts:* Indian meal moth, Warehouse beetle, Cigarette beetle  
*Kit contents:* 10 traps with hangers  
 10x10 kits/case  
 IL-408-10 kit (10)  
 IL-408-100 case (100)

#### Serrico™ Trap Kits

*Kit contents:* 10 traps, 10 food lures, 10 sex-attractant lures/kit  
 10x10 kits/case  
 IL-500-10 kit (10)  
 IL-500-100 case (100)



## Stored Product Pheromone Kits

### WAREHOUSE/KHAPRA BEETLE



*(Trogoderma spp.)*

#### All Beetle Trap with SPB Lure Kit

**Kit contents:** 10 traps with sticky boards, 10 SPB Pheromone Lures, Instruction Sheet  
10x10 kits/case  
IL-2800-10 kit (10)  
IL-2800-100 case (100)



#### NoSurvivor™ Trap Kits

**Kit contents:** 10 traps with hangers, 10 Bullet Lures/kit  
10x10 kits/case  
IL-264-10 kit (10)  
IL-264-100 case (100)



### SAW-TOOTHED GRAIN BEETLE / MERCHANT GRAIN BEETLE

#### All Beetle Trap with Gel Kit

**Kit contents:** 10 Ready-To-Use All Beetle Traps with Pheromone Gel, Instruction Sheet.  
10x10 kits/case  
IL-2700-10 kit (10)  
IL-2700-100 case (100)



#### PantryPatrol™

##### Corner Trap Kits

**Kit contents:** 24 traps, 24 pheromone/gel dispensers.  
**Attracts:** Flour beetles, Indian meal moth, Warehouse beetle, Cigarette beetle, Rice weevil, Lesser grain borer  
IL-1700-24 display case (24)  
IL-1700-100 bulk case, no pkg. (100)



**Saw-toothed Grain Beetle**  
*(Oryzaephilus surinamensis)*



**Merchant Grain Beetle**  
*(Oryzaephilus mercator)*

### ALMOND MOTH / TOBACCO MOTH

#### NoSurvivor™ Trap Kits

**Attracts:** Almond Moth  
**Kit contents:** 10 traps with hangers, 10 Bullet Lures/kit  
10x10 kits/case  
IL-170-10 kit (10)  
IL-170-100 case (100)



#### NoSurvivor™ Trap Kits

**Attracts:** Tobacco Moth  
**Kit contents:** 10 traps with hangers, 10 Bullet Lures/kit  
10x10 kits/case  
IL-180-10 kit (10)  
IL-180-100 case (100)



**Almond Moth**  
*(Ephestia cautella)*



**Tobacco Moth**  
*(Ephestia eleutella)*

## Stored Product Pheromone Kits

### RICE WEEVIL / MAIZE WEEVIL



**Rice Weevil**  
(*Rhyzopertha dominica*)



#### All Beetle Rice Weevil Trap

*Kit contents:* 10 All Beetle Rice Weevil traps  
10 Bullet Lures/kit  
Instruction sheet  
10x10 kits/case

IL-700-10 kit (10)  
IL-700-100 case (100)



#### All Beetle Trap with Gel Kit

*Kit contents:* 10 Ready-To-Use All Beetle Traps with Pheromone Gel  
Instruction sheet  
10x10 kits/case

IL-2700-10 kit (10)  
IL-2700-100 case (100)



#### **Pantry Patrol™** Corner Trap Kits

*Kit contents:* 24 traps, 24 pheromone/gel dispensers.

IL-1700-24 display case (24)  
IL-1700-100 bulk case, no pkg. (100)

*Attracts:* Flour beetles, Indian meal moth, Warehouse beetle, Cigarette beetle, Rice weevil, Lesser grain borer

### LESSER GRAIN BORER / LARGER GRAIN BORER



**Lesser Grain Borer**  
(*Rhyzopertha dominica*)



**Larger Grain Borer**  
(*Prostephanus truncatus*)

#### **NoSurvivor™** Trap Kits

*Kit contents:* 10 traps with hangers,  
10 Bullet Lures/kit  
10x10 kits/case

**Lesser Grain Borers**  
IL-900-10 kit (10)  
IL-900-100 case (100)

**Larger Grain Borers**  
IL-950-10 kit (10)  
IL-950-100 case (100)



### HIDE BEETLE



(*Dermestes maculatus*)

#### All Beetle Hide Beetle Kit

*Kit contents:* 10 All Beetle Traps with sticky boards,  
10 Hide Beetle Lures, Instruction Sheet.  
10x10 kits/case  
10x10 kits/case

IL-2000-10 kit (10)  
IL-2000-100 case (100)



#### **Flat** Trap Kits

*Kit contents:* 10 traps with hangers,  
10 Lures/kit  
10x10 kits/case

IL-1000-10 kit (10)  
IL-1000-100 case (100)



## Museum/Fabric-Pest Pheromone Kits

### WEBBING CLOTHES MOTH / CASEMAKING CLOTHES MOTH / BROWN-DOTTED CLOTHES MOTH

#### Flat Trap Kits

Kit contents: 10 traps  
10 Bullet Lures/kit  
10x10 kits/case

For All Species of Clothes Moth  
IL-120-10 kit (10)  
IL-120-100 case (100)

For Casemaking Moth  
IL-225-10 kit (10)  
IL-225-100 case (100)



#### NoSurvivor™ Trap Kits

Kit contents: 10 traps  
10 Bullet Lures/kit  
10x10 kits/case

For All Species of Clothes Moth  
IL-124-10 kit (10)  
IL-124-100 case (100)

For Casemaking Moth  
IL-220-10 kit (10)  
IL-220-100 case (100)



**Webbing Clothes Moth**  
(*Tineola bisselliella*)



**Casemaking Clothes Moth**  
(*Tinea pellionella*)



**Brown-Dotted Clothes Moth**  
(*Niditinea fuscella*)

### VARIED CARPET BEETLE / BLACK CARPET BEETLE

#### Flat Trap Kits

For Varied Carpet Beetle  
Kit contents: 10 traps,  
10 Bullet Lures/kit.  
10x10 kits/case.

IL-110-10 kit (10)  
IL-110-100 case (100)

For Black Carpet Beetle  
Kit contents: 10 traps,  
10 Bullet Lures/kit.  
10x10 kits/case.

IL-130-10 kit (10)  
IL-130-100 case (100)



#### All Beetle AA Carpet Beetle Kit

Kit contents: 10 All Beetle traps with sticky boards,  
10 AA Multi-Species Carpet Beetle Lures,  
10 Dermestid Food Attractant Lures  
10x10 kits/case

IL-2110-10 kit (10)  
IL-2110-100 case (100)



**Varied Carpet Beetle**  
(*Anthrenus verbasci*)



**Black Carpet Beetle**  
(*Attagenus unicolor*)

### MUSEUM KIT

Kit contents: 10 Flat traps, 10 Trapper Monitor traps. Also contains 2 lures for Varied carpet beetle, 2 lures for Black carpet beetle, 2 lures for Webbing clothes moth, 2 lures for Cigarette beetle, and 2 lures for Warehouse beetle. ID Chart and instructions are enclosed. This Museum Monitoring System contains no pesticides.

IL-250-20



### FREEZER BAG

Set of 5 reusable Freezer Treatment Bags. Zip top closure. Metalized polyethylene freezer bag helps ensure a quick freeze. Includes 5 large size (18 x 24") metalized polyethylene bags with a capacity of 3 large sweaters each. Also includes instruction sheet, and clothes moth management fact sheet.

IL-6202-5



# Anoxic Treatment

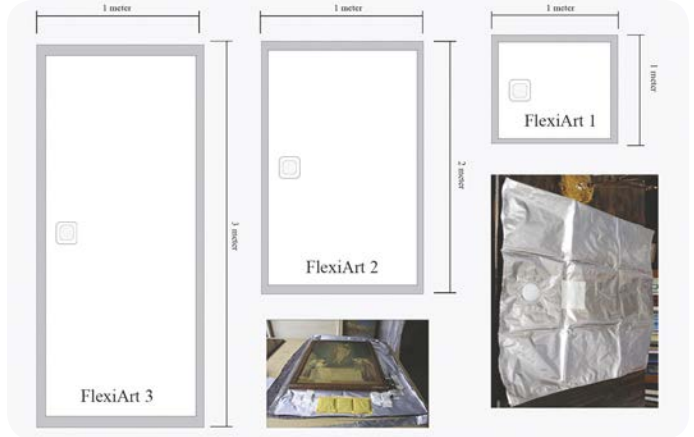
## ANOXIC CONTAINERS



### AnoxiBug FlexiArt

Anoxic enclosures designed for flat objects, like paintings.

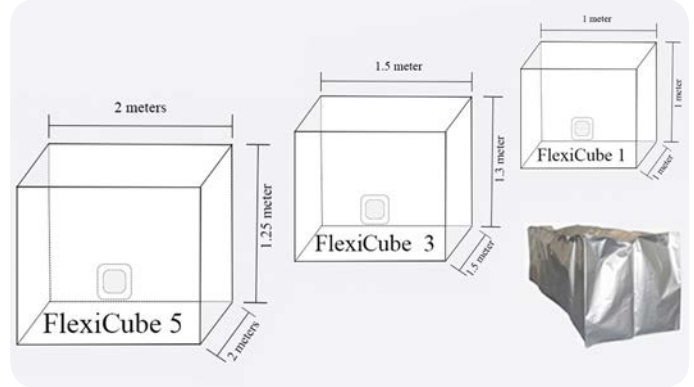
- HW-T486 FlexiArt 3**  
1 x 3 meters, can fit objects up to 60 mm thick
- HW-T485 FlexiArt 2**  
1 x 2 meters, can fit objects up to 45 mm thick
- HW-T484 FlexiArt 1**  
1 x 1 meter, can fit objects up to 30 mm thick



### AnoxiBug FlexiCube

Anoxic enclosures designed for larger objects, like furniture.

- HW-T489 FlexiCube 5**  
2 x 2 x 1.25 meters
- HW-T488 FlexiCube 3**  
1.5 x 1.5 x 1.3 meters
- HW-T487 FlexiCube 1**  
1 x 1 x 1 meters



*Custom sizes available on request*

## ANOXIC ACCESSORIES



### AnoxiBug Oxygen Indicator

**HW-02-AI**

The AnoxiBug Oxygen indicator Unit gives the user real-time readings of whether or not the oxygen levels in your anoxic treatment are below lethal levels. Once below this level, the light will turn from red to green.



### AnoxiBug Humidity Stabilizer

**HW-T491**

The AnoxiBug Humidity Stabilizers are made of desiccant clay and are used to stabilize the humidity levels within AnoxiBug enclosures during the treatment process.

- FlexiArt 1 → 4 Stabilizers*
- FlexiArt 2 → 4 Stabilizers*
- FlexiArt 3 → 4 Stabilizers*
- FlexiCube 1 → 4 Stabilizers*
- FlexiCube 3 → 12 Stabilizers*
- FlexiCube 5 → 20 Stabilizers*



### AnoxiBug Oxygen Scavenger

**HW-T550**

The AnoxiBug Scavengers are used to remove the oxygen from within an AnoxiBug enclosure. Two Scavengers are sufficient for each 1 cubic meter of air.

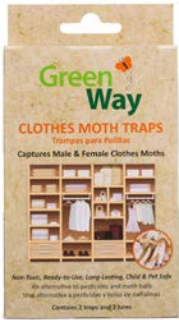
- FlexiArt 1 → 2 Scavengers*
- FlexiArt 2 → 2 Scavengers*
- FlexiArt 3 → 2 Scavengers*
- FlexiCube 1 → 2 Scavengers*
- FlexiCube 3 → 6 Scavengers*
- FlexiCube 5 → 10 Scavengers*



GreenWay is committed to solving pest problems by offering alternatives to traditional pesticides.

GreenWay Traps are:  
Non-toxic, ready-to-use, long-lasting, and child & pet safe

### GREENWAY CLOTHES MOTH TRAP



#### Clothes Moth Trap

GW101

- Protect your rugs, clothing, antiques, and taxidermy
- Captures males and females
- Each unit contains 2 traps and 2 lures

### GREENWAY PANTRY PATROL TRAP

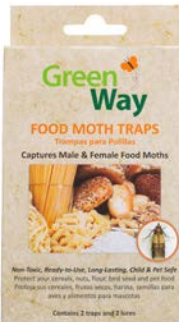


#### Pantry Patrol Trap

GW102

- Capture a variety of beetles that attack your stored food
- Includes pheromone and food attractant for dozens of insects
- Each unit contains 2 traps and 2 lures

### GREENWAY FOOD MOTH TRAP



#### Food Moth Trap

GW103

- Protect your cereals, nuts, flour, bird seed, and pet food
- Captures males and females
- Each unit contains 2 traps and 2 lures

### GREENWAY FRUIT FLY TRAP



#### Fruit Fly Trap

GW104

- Protect your fruits, vegetables, and more
- Each unit contains 2 traps with attractant

### GREENWAY WINDOW FLY TRAP



#### Window Fly Trap

GW105

- Capture flies plus many other flying insects
- Use in any room where there is flying insect activity
- Each unit contains 4 traps

### GREENWAY SPIDER & SILVERFISH TRAP



#### Spider and Silverfish Trap

GW106

- Capture spiders and silverfish plus many other crawling insects
- Traps can be used year round
- Each unit contains 6 glue traps

GREENWAY PRODUCTS

## Replacement Pheromone Lures

### INDIAN MEAL MOTH / MEDITERRANEAN FLOUR MOTH / ALMOND MOTH



**Indian Meal Moth**  
(*Plodia interpunctella*)



**Mediterranean Flour Moth**  
(*Ephesia kuehniella*)



#### Bullet Lure

*Attracts:* Indian meal moth, Mediterranean flour moth, Almond moth, Tobacco moth, and Raisin moth

IL-103-10  
IL-103-100



**Almond Moth**  
(*Ephesia cautella*)



#### Bullet Lure

*Attracts:* Almond moth

IL-173-10  
IL-173-100

### TOBACCO MOTH



(*Ephesia elutella*)



#### PTL Multi-Species Lure

*Attracts:* Indian meal moth, Warehouse beetle and Cigarette beetle

IL-108-10  
IL-108-100



#### Bullet Lure

IL-183-10  
IL-183-100

### CIGARETTE BEETLE



(*Lasioderma serricorne*)

#### Cigarette Beetle Lure

IL-503-10; IL-503-100



#### PTL Multi-Species Lure

*Attracts:* Indian meal moth, warehouse beetle and cigarette beetle

IL-108-10; IL-108-100



#### Serrico Lure

Two-lure system of sex pheromone and food attractant

IL-501-10; IL-501-100



### RED & CONFUSED FLOUR BEETLE



(*Tribolium spp.*)



#### Bullet Lure

IL-303-10  
IL-303-100

**PantryPatrol™**

IL-1705-10  
IL-1705-100



### WAREHOUSE / KHAPRA BEETLE



(*Trogoderma spp.*)



#### PTL Multi-Species Lure

*Attracts:* Indian meal moth, Warehouse beetle and Cigarette beetle

IL-108-10  
IL-108-100



#### Bullet Lure

IL-203-10  
IL-203-100

# Replacement Pheromone Lures

## ANGOUMOIS GRAIN MOTH



*(Sitotroga cerealella)*



### Bullet Lure

IL-753-10  
IL-753-100

## RICE WEEVIL



*(Sitophilus oryzae,  
Sitophilus zeamais)*



### Bullet Lure

IL-703-10  
IL-703-100

## CARPET BEETLES



**Varied Carpet Beetle**  
*(Anthrenus verbasci)*



### AA Lure

*Attracts:* Black carpet beetle, Varied carpet beetle  
IL-243-10  
IL-243-100



### Bullet Lure

*Attracts:* Varied carpet beetle  
IL-113-10  
IL-113-100



**Black Carpet Beetle**  
*(Attagenus spp.)*



### Bullet Lure

*Attracts:* Black carpet beetle  
IL-134-10  
IL-134-100



### Dermestid Lure

*Attracts:* All Carpet beetle species and Dermestid beetles  
IL-3051-10  
IL-3051-100

## LESSER & LARGER GRAIN BORERS



**Lesser Grain Borer**  
*(Rhizopertha dominica)*



**Larger Grain Borer**  
*(Prostephanus truncatus)*



### Bullet Lure

*Lesser Grain Borer*  
IL-903-10, IL-903-100



### Bullet Lure

*Larger Grain Borer*  
IL-953-10, IL-953-100

## SAW-TOOTHED / MERCHANT GRAIN BEETLE



**Saw-toothed Grain Beetle**  
*(Oryzaephilus surinamensis)*



**Merchant Grain Beetle**  
*(Oryzaephilus mercator)*



### Stored Product Beetle Lure

IL-1805-10, IL-1805-100

**PantryPatrol™**

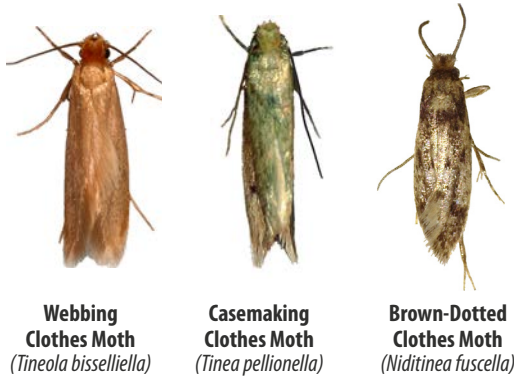
IL-1705-10  
IL-1705-100



REPLACEMENT PHEROMONE LURES

# Replacement Lures & Traps

REPLACEMENT LURES AND TRAPS



## Bullet Lure

Attracts: Webbing clothes moth, Casemaking clothes moth, and Brown-dotted clothes moth

IL-123-10  
IL-123-100

## CASEMAKING CLOTHES MOTH



## Bullet Lure

Attracts: Casemaking clothes moth

IL-223-10  
IL-223-100

## HIDE BEETLE



## Hide Beetle Lure

IL-1003-10  
IL-1003-100

## INDIAN MEAL MOTH SUPPRESSION



Indian Meal Moth  
(*Plodia interpunctella*)

IL-105-10  
IL-105-100

## GREENWAY FRUIT FLY TRAPS



Fruit Fly  
(*Drosophila*)

IL-1520-12  
IL-1520-120

## Replacement Traps and Accessories

### NoSurvivor™

Diamond Trap

IL-1100-10 10/pack  
IL-1100-100 100/pack



### Moth Suppression®

Diamond Trap

IL-1150-10 10/pack  
IL-1150-100 100/pack



### Warehouse Trap

Plastic. Includes two gridded sticky liners/trap

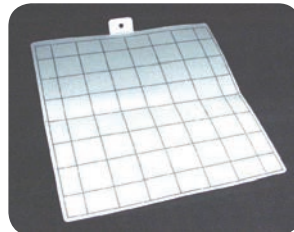
IL-1200-10 10/pack  
IL-1200-100 100/pack



### Replacement Sticky Liners

For Warehouse Trap

IL-1250-10 10/pack  
IL-1250-100 100/pack



### Serrico™

Traps only

IL-511-10 10/pack  
IL-511-100 100/pack



### Trapper™ Sticky Insect Monitors

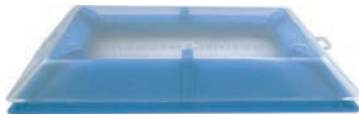
IL-1600-100 100/pack



### All Beetle Traps

Includes 10 clear covers, bases and trays only

IL-2600-10 10/pack  
IL-2600-100 100/pack



### Flat Traps

IL-550-10 10/pack  
IL-550-100 100/pack



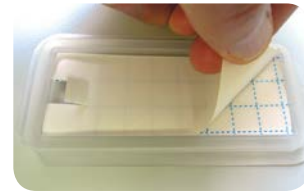
### All Beetle Trap Trays

IL-1820-10 10/pack  
IL-1820-100 100/pack



### All Beetle Trap Glue Boards

IL-1810-50 50/pack  
IL-1810-500 500/pack



### PantryPatrol™

Traps only

IL-1750-10 10/pack  
IL-1750-100 100/pack



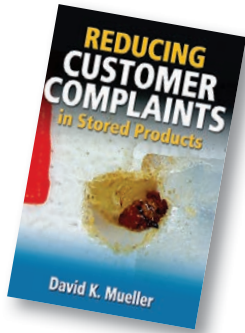
### SightTrap Replacement Glue Boards

ST-1001-10 10/pack  
ST-1001-100 100/pack



# The Bookstore

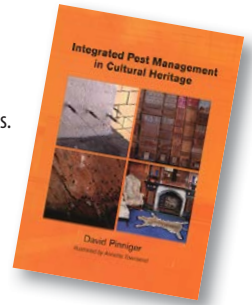
**Reducing Customer Complaints,**  
by David K. Mueller,  
336 pages.  
IL-B23



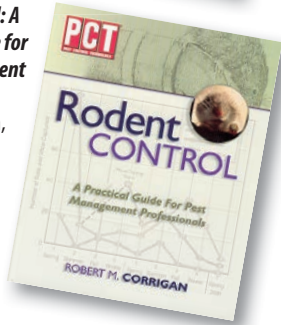
**Field Guide for Management of Structure-Infesting Ants,**  
2nd Edition  
by Stoy Hedges,  
304 pages.  
IL-B12



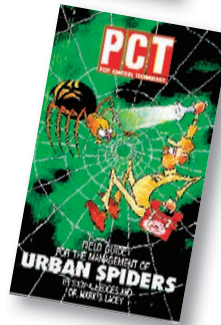
**Integrated Pest Management in Culture Heritage,**  
by David Pinnering,  
142 pages, 109 images.  
IL-B24



**Rodent Control: A Practical Guide for Pest Management Professionals,**  
by R.M. Corrigan,  
355 pages.  
IL-B3



**Field Guide for the Management of Urban Spiders,**  
by Stoy Hedges & Dr. Mark Lacey,  
220 pages.  
IL-B13



**Bugs Be Gone,**  
by Gary W. Bennett,  
223 pages.  
IL-B25



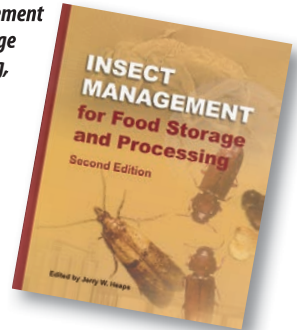
**Mallis Handbook of Pest Control, 10th Edition,**  
by Stoy Hedges,  
1599 pages.  
IL-B4



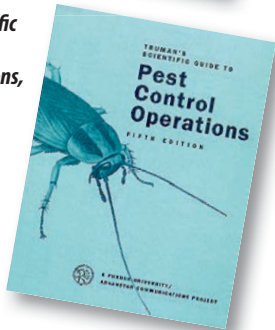
**Field Guide for the Management of Structure-infesting Beetles, Vol. 1: Hide & Carpet Beetles/Wood-boring Beetles,**  
by Stoy Hedges and Dr. Mark Lacey,  
196 pages.  
IL-B14



**Insect Management for Food Storage and Processing,**  
Edited by Jerry Heaps,  
231 pages.  
IL-B20



**Truman's Scientific Guide to Pest Control Operations,**  
6th edition, by Bennett, Owens, and Corrigan,  
574 pages,  
hard cover.  
IL-B7



**Field Guide for the Management of Structure-Infesting Beetles, Vol. 2: Stored Product Beetles/Occasional & Overwintering Beetles,**  
by Stoy Hedges and Dr. Mark Lacey,  
212 pages.  
IL-B15



**Pest Management Practical Guide,**  
by David Pinnering,  
60 pages.  
IL-B22



**Field Guide for the Management of Flies,**  
by Stoy Hedges,  
150 pages.  
IL-B11



**Technician's Handbook,**  
by R. Kramer  
321 pages.  
IL-B16



**Museum Poster,**  
17" x 22".  
IL-5500



Visit the Bookstore for more books at: [www.insectslimited.com](http://www.insectslimited.com)

TO ORDER CALL 1-800-992-1991 (USA CALLS ONLY) OR 1-317-896-9300



Insects Limited's trained Board Certified Entomologists (BCE) have many years of experience and training with pest management and stored product pest problem solving. We have domestic and international experience with major brand named companies that grow, harvest, process, and distribute food products. We have traveled to over 60 countries to help solve stored product insect problems. Our services range from in-house pest identification and advanced training, to in-field inspections, audits, and museum pest management.



### INSECT BIOASSAYS

Insects Limited, Inc. can provide you with test insects for determining the efficacy of your treatments. Small vials are filled with various stored product insects that can be shipped next day to your location. We raise over fifteen species of stored product insects.

#### Fumigation Bioassay

10 vials of 10 insects each.

- IL-3000-10 Adults
- IL-3001-10 Larvae
- IL-3002-10 Pupae
- IL-3003-10 Eggs

Insect Bioassays available for Indian meal moth, Red flour beetle, Confused flour beetle, Saw-toothed grain beetle, Cigarette beetle, Warehouse beetle, Rice weevil.

#### Fogging Bioassay

10 vials of 10 insects each.

- IL-3020-10 Adult Flour Beetles only

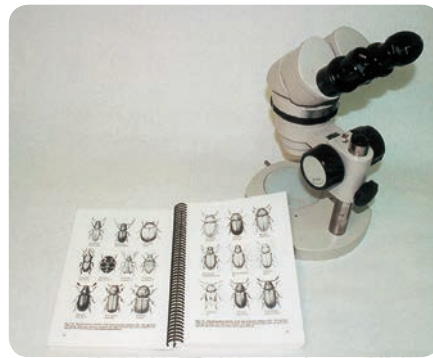


### LABORATORY SERVICES

#### Insect ID: IL-5000

Insect identification services are available upon request at a rate of \$125 per insect or \$150/h for multiple insects. A written report is included in this cost. For all mailed samples, please include your contact info and document what the specimen was feeding on and the environmental conditions where it was found. Whenever possible, place in a vial or crush proof container.

Our laboratory and professional staff can help you with your contracted R & D needs. Our highly trained staff can perform studies on insect attractants, insect traps, food preference tests, and package penetration as well as making customized pheromone lures for research purposes.



## Professional Services

### PUBLIC SPEAKING

If you have a program where you need a speaker, contact Insects Limited. We have qualified and seasoned speakers to cover a wide range of topics.

### PROFESSIONAL CONSULTATION

Insects Limited, Inc. provides professional consultation on pest management issues including pheromone programs as well as pest issues in food processing and in museums. Our job is to help you solve your pest problems.



### EDUCATIONAL PROGRAMS

We strive to be an education and training leader in our industry. Every year Insects Limited, Inc. sponsors continued education programs for our customers. Since 1982, we have trained over 10,000 people throughout the world on the latest information and techniques for stored product protection. In 1998 we built a new training facility in our office that allows us to bring customers on-site for personalized training. Contact us for the next conference and workshop.



### IN-HOUSE RESEARCH & DEVELOPMENT

Our laboratory and professional staff can help you with your contracted R & D needs. Our chemistry/entomology laboratory staff can perform studies on insects attractants, traps and package penetration as well as making customized pheromone lures for research purposes.

## Conditions of Sale

**MINIMUM ORDER:** A \$50.00 minimum order is required on all orders. There will be a \$10.00 processing fee for all orders that are less than \$50.00.

**TERMS:** Net 30 days on approved accounts. A service charge of 1.5% per month will be assessed on accounts over 30 days. Shipments will be sent COD on all other accounts. Shipments will not be made to accounts with a past due balance.

We accept Visa, MasterCard and American Express.

**WORLDWIDE DELIVERIES AVAILABLE:** Orders from outside the USA should be prepaid by credit card, direct wire transfer or prepaid check drawn on U.S. Bank only.

**FREIGHT POLICY:** Freight is FOB Westfield, Indiana USA unless otherwise specified.

**QUOTATIONS:** If looking to purchase quantities larger than what is listed in this publication, please contact us for a quote. We will also quote on products not listed in our catalog.

# “The Dirty Dozen” Museum Pests



**Webbing Clothes Moth**  
(*Tineola bisselliella*)



**Casemaking Clothes Moth**  
(*Tinea pellionella*)



**Common Silverfish**  
(*Lepisma saccharina*)



**Gray Silverfish**  
(*Lepisma longicaudata*)



**Black Carpet Beetle**  
(*Attagenus unicolor*)



**Varied Carpet Beetle**  
(*Anthrenus variabile*)



**Odd Beetle**  
(*Thyodrias contractus*)



**Cabinet Beetle**  
(*Trogoderma inclusum*)



**Cigarette Beetle**  
(*Lasioderma serricorne*)



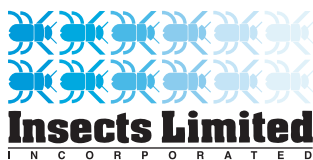
**Drugstore Beetle**  
(*Stegobium paniceum*)



**Furniture Beetle**  
(*Anobium punctatum*)



**Powderpost Beetle**  
(*Lyctid spp.*)



16950 Westfield Park Road, Westfield, Indiana 46074-9374 USA  
tel 1-317-896-9300 • fax 1-317-867-5757 • email: orders@insectslimited.com

[www.insectslimited.com](http://www.insectslimited.com)

# "The Dirty Dozen" Food Pests



**Indian Meal Moth**  
(*Plodia interpunctella*)



**Mediterranean Flour Moth**  
(*Ephesia kuehniella*)



**Cigarette Beetle**  
(*Lasioderma serricorne*)



**Drugstore Beetle**  
(*Stegobium paniceum*)



**Red Flour Beetle**  
(*Tribolium castaneum*)



**Confused Flour Beetle**  
(*Tribolium confusum*)



**Saw-toothed Grain Beetle**  
(*Oryzaephilus surinamensis*)



**Merchant Grain Beetle**  
(*Oryzaephilus mercator*)



**Granary Weevil**  
(*Sitophilus granarius*)



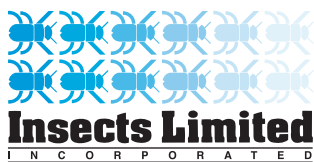
**Rice Weevil**  
(*Sitophilus oryzae*)



**Lesser Grain Borer**  
(*Rhyzopertha dominica*)



**Warehouse Beetle**  
(*Trogoderma variable*)



16950 Westfield Park Road, Westfield, Indiana 46074-9374 USA  
tel 1-317-896-9300 • fax 1-317-867-5757 • email: orders@insectslimited.com

[www.insectslimited.com](http://www.insectslimited.com)

© Copyright Crown, courtesy of CSL; © Copyright 2019 Insects Limited, Inc.